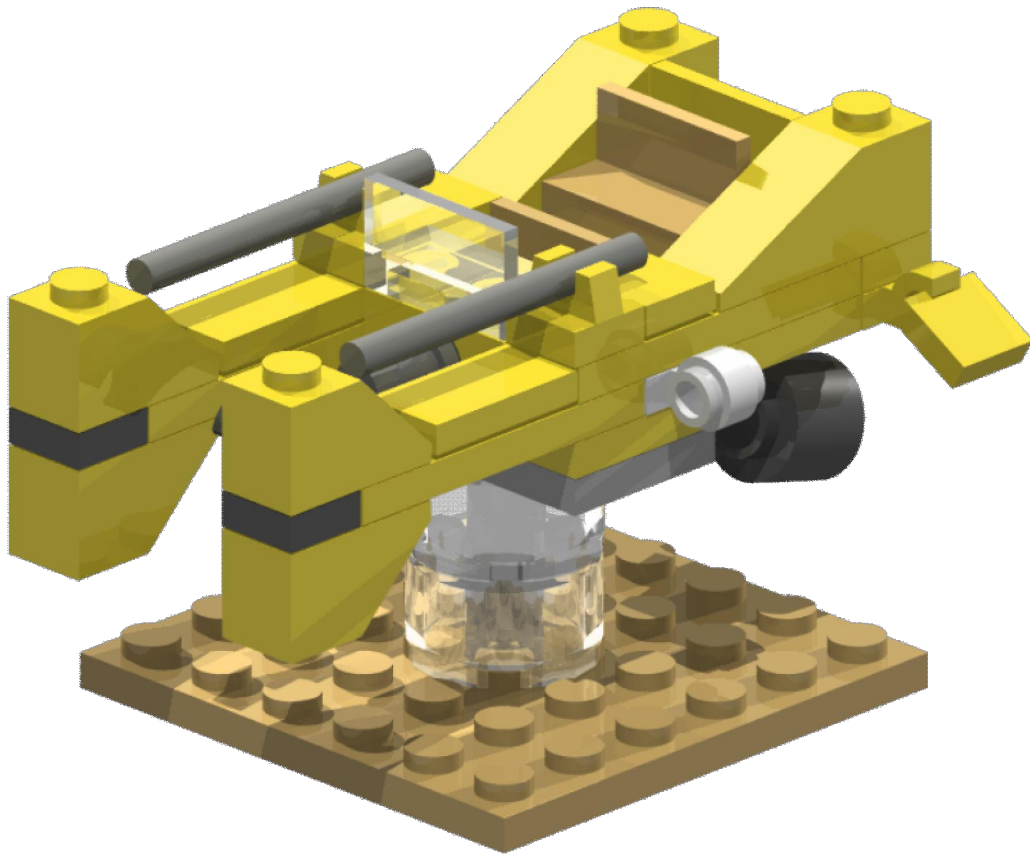


Bite Sized Mule



*A Micro-Scale Model by Chris Doyle of
ReasonablyClever.com*

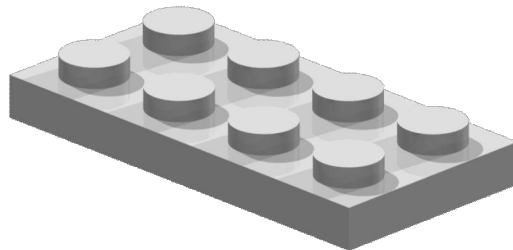
Welcome to the building instructions for the “Bite Sized Mule”. To begin, you’ll need to assemble the following LEGO bricks:

Quantity	Color	Description
2	Dark Grey	Bar 4L Lightsword Blade
1	Black	Brick 1x1 with studs on four sides
2	Trans-Clear	Brick 2x2 Round
2	Black	Mini-fig utensil: Saucepan
1	Black	Mini-fig utensil: Tool Spanner/Screwdriver
1	Yellow	Panel 1x2x1
2	Dark Orange	Panel 1x2x1
1	Trans-Clear	Panel 1x2x1
2	Black	Plate 1x1
2	Yellow	Plate 1x1 with Horizontal Clip
2	White	Plate 1x1 with clip light (Type 2)
1	Black	Plate 1x2 with 1 offset stud
2	Yellow	Plate 1x2 with 1 offset stud
5	Yellow	Plate 1x4
2	Yellow	Plate 2x2 Corner
1	Light Grey	Plate 2x4
1	Yellow	Plate 2x4
1	Tan	Plate 6x6
2	Yellow	Slope Brick 3x1
2	Yellow	Slope Brick 2x1
2	Yellow	Slope Brick 2x1 Inverted
1	Yellow	Technic Brick 1x2 with Hole
1	Dark Grey	Technic Pin $\frac{3}{4}$
2	Yellow	Tile 1x1 with Clip
4	Yellow	Tile 1x1 with Groove
2	Yellow	Tile 1x2 with Groove

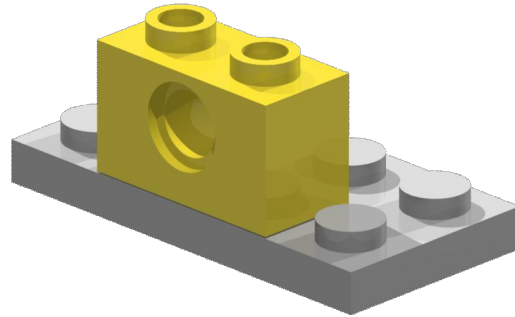
That’s a total of 47 pieces.

Next, just follow these step-by-step pictures to assemble your Bite Sized Mule!

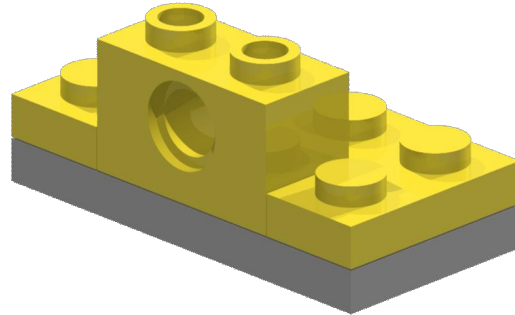
Step 1: Start with the light grey 2x4 plate.



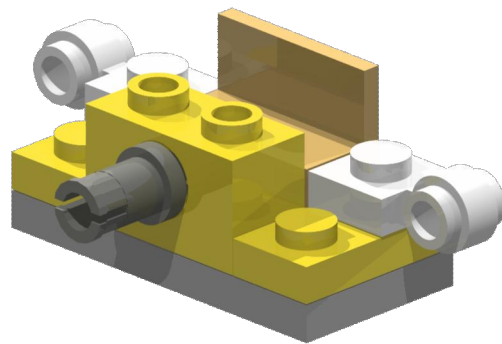
Step 2: Then add the 1x2 Technic Brick with Hole.



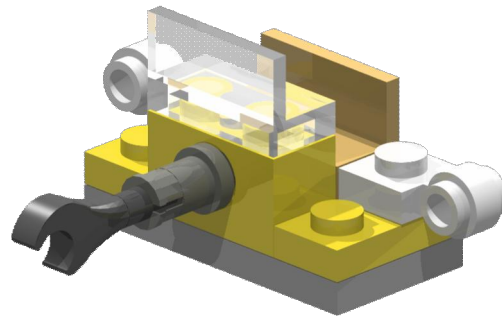
Step 3: Add the two 2x2 corner plates.

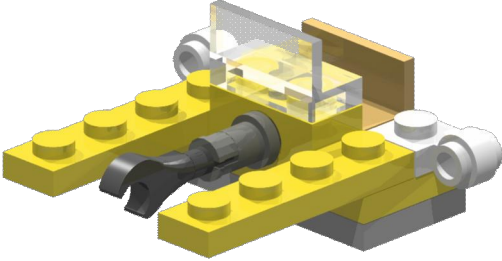
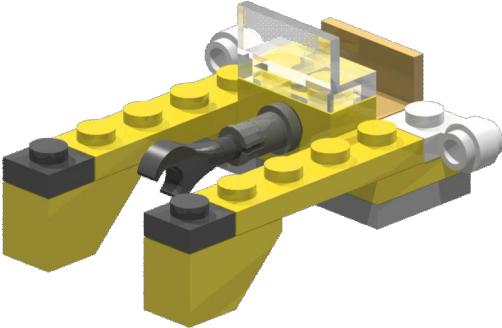
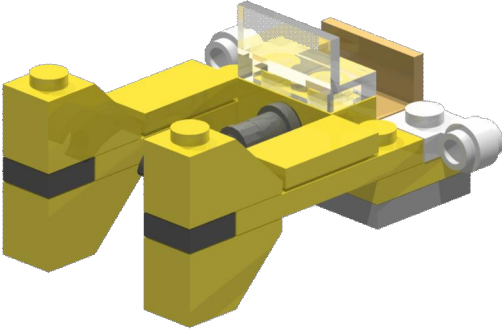
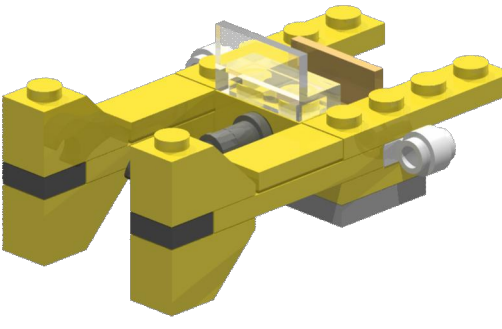


Step 4: Add the first dark orange panel, the two white 1x1 plates with clip lights and the Technic pin.

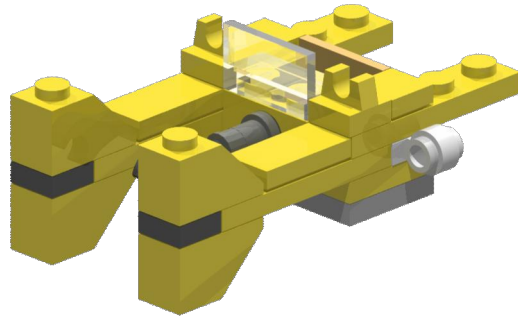


Step 5: Add the trans-clear 1x2x1 panel and the spanner/screwdriver.

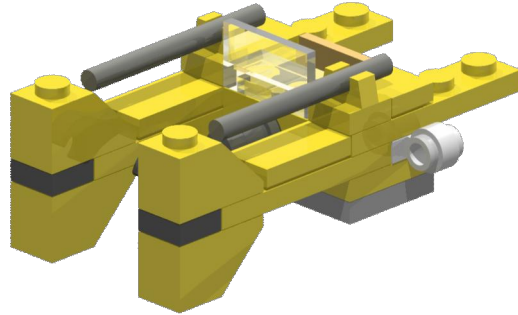


<p>Step 6: 1x4 plate (x2)</p>	
<p>Step 7: 1x1 black plate and 1x2 inverted slope (x2)</p>	
<p>Step 8: 1x2 slope and 1x2 tile with grooves (x2)</p>	
<p>Step 9: 1x4 plate (x2)</p>	

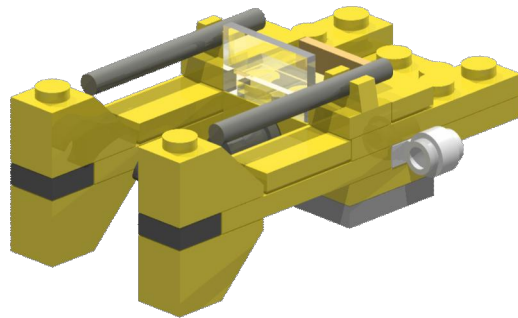
Step 10: 1x1 plate with clip and 1x1 tile with groove (x2)



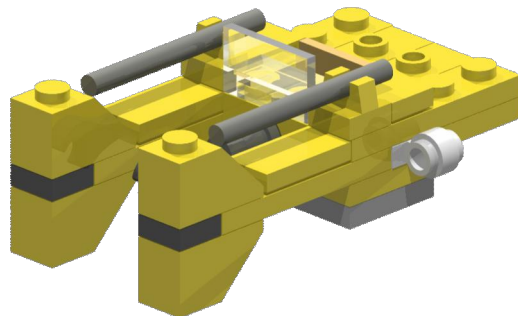
Step 11: Dark Grey bar (x2)

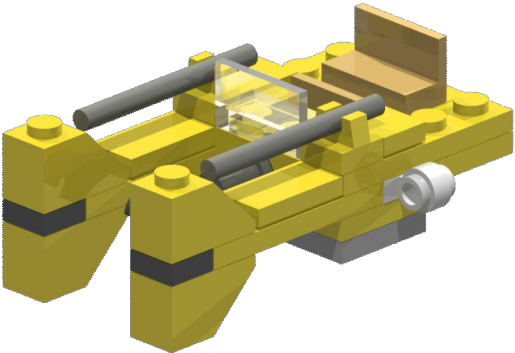
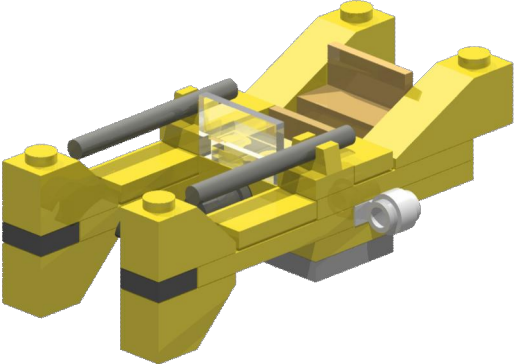
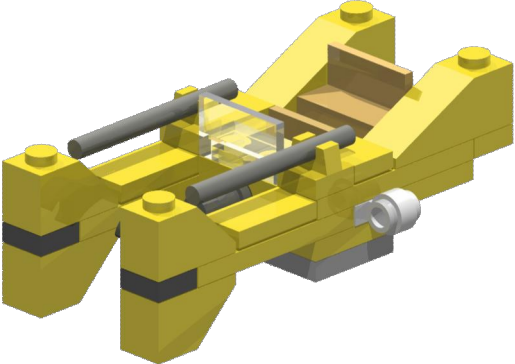
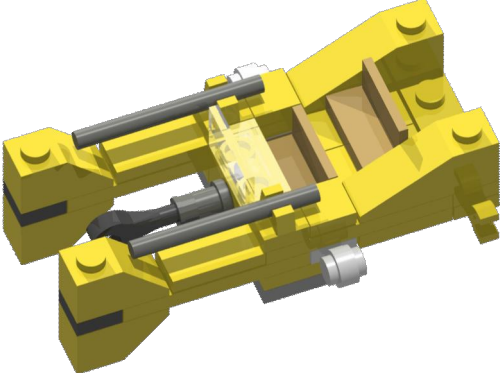


Step 12: Yellow 2x4 plate (at rear)

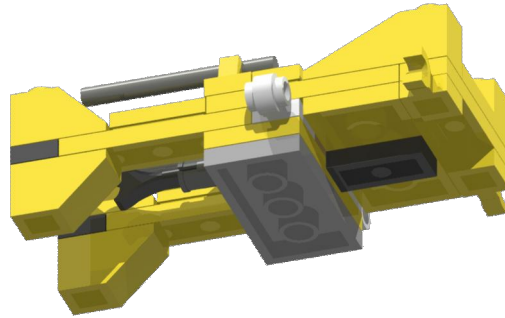


Step13: Yellow 1x2 tile with offset stud (x2)

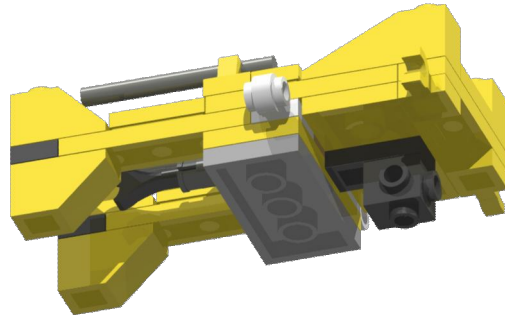


<p>Step 14: Dark Orange 1x2x1 panel</p>	
<p>Step 15: Yellow 1x3 slope (x2)</p>	
<p>Step 16: Yellow 1x4 plate (under slopes)</p>	
<p>Step 17: Yellow 1x1 plate with horizontal clip (x2) (one on each side)</p>	

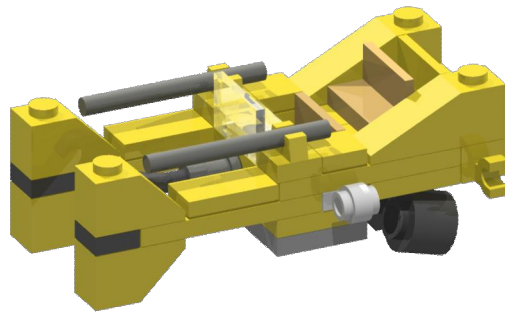
Step 18: Black 1x2 tile with offset stud (Attach in center "dot")



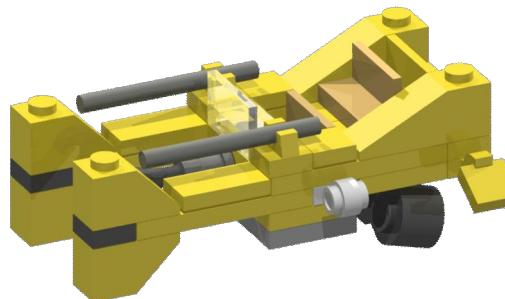
Step 19: Black 1x1 brick with studs on four sides.



Step 20: Black Saucepan (x2) (one on each side)



Step 21: Yellow 1x1 tile with groove (x2) (one on each side)



Step 22: Assemble display base as shown. (2 2x2 round bricks and the 6x6 plate)

